

Product Specification

Hi-Q Pump

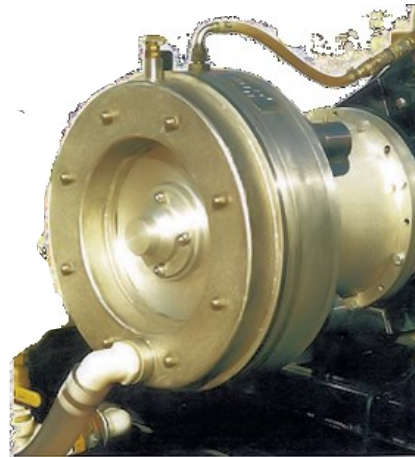
A revolution in pumping technology the unique Harben radial piston pumps are amongst the best performing, most durable and reliable high pressure process pumps on the marketplace today.

Benefits include

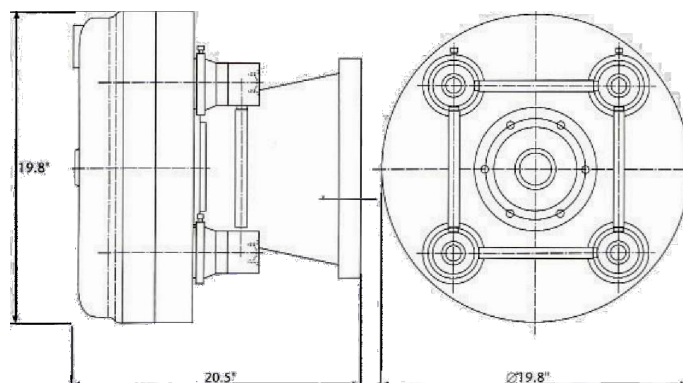
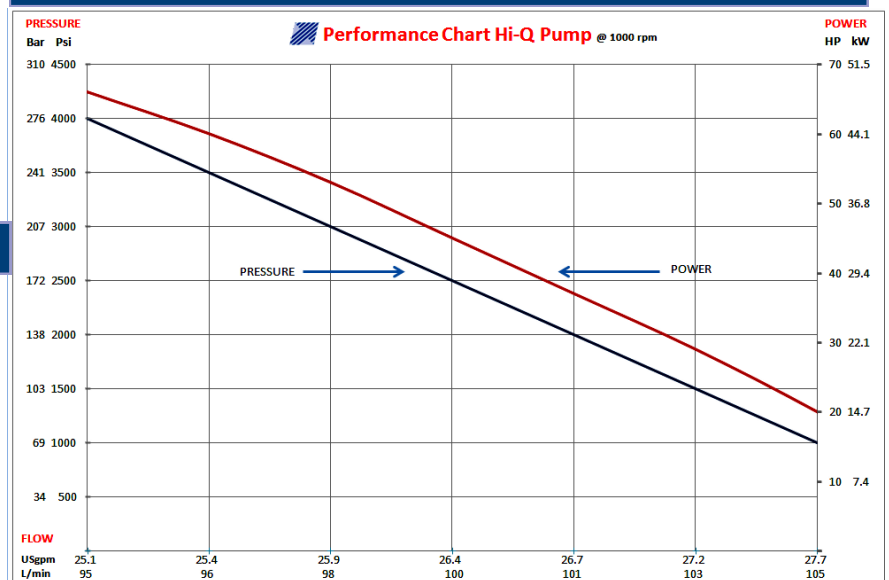
- High flow and pressure characteristics
- Unrivalled reliability and low running costs
- 4 cylinders configuration provides smooth output
- Filtration to 150 microns
- Pump low lubricity fluid with ease
- Run dry without damage
- Compact and lightweight
- Simple to pressure compensate

Main Applications

- Water hydraulic systems & power packs
- Umbilical flushing
- Drain and sewer cleaning
- Tube descaling
- Hydrostatic testing
- Pumping demineralised water
- Floor and surface cleaning
- Subsea cleaning & hydro testing



Performance Graph



Flowplant Group Ltd

Gemini House, Brunel Road,
Churchfields Industrial Estate,
Salisbury, Wiltshire. SP2 7PU
United Kingdom

t: +44 (0)1722 325 424
f: +44 (0)1722 411 329
e: sales@flowplant.co.uk

- High Pressure
- Cleaner Solutions

Note: The "Hi-Q" pump is suitable for gearbox, direct and hydraulic drive systems. Details of individual mounting methods are available upon request.

Performance graph show above is for 1000 RPM pump performance.

Flowplants' policy is one of continuous improvement and the right is reserved to revise specifications without prior notice.

