

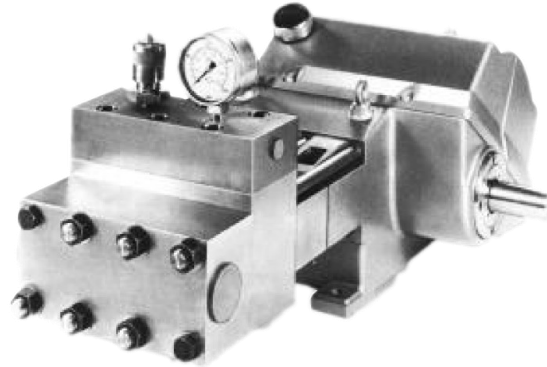
AQUA AHF 215

Main Applications

- High pressure Coolant pumping
- Pipe and tube cleaning
- Pressure testing boilers, pipes & tanks
- High pressure water jet cleaning & descaling
- Water and water abrasive surface preparation

Accessories

- Relief and unloader valves
- Pneumatically actuated valves



Available Build Standards

- BS EN 1829
- ASME III, Div 1, Sub Sect NC, Class 2
- API 674

- **Shaft diameter**
50mm (key 14 x 9 x 80)
- **Inlet port**
2" BSP
- **Discharge ports**
1/2" - 1 1/4" BSP
- **Dimensions**
L1040 W565 H420
- **Max fluid temperature**
60°C (140°F)
- **Max inlet pressure**
4.57 bar (66psi)
- **Pump Weight**
391kg

Flowplant Group Ltd

Gemini House, Brunel Road,
Churchfields Industrial Estate,
Salisbury, Wiltshire. SP2 7PU
United Kingdom

t: +44 (0)1722 325 424
f: +44 (0)1722 411 329
e: sales@flowplant.co.uk

- High Pressure
- Cleaner Solutions

Performance

PLUNGER DIA mm	MOTOR POWER (kW)					
	110 kW		90 kW		75 kW	
	Max	Act	Max	Act	Max	Act
	Pressure	Flow	Pressure	Flow	Pressure	Flow
	Bar	L/min	Bar	L/min	Bar	L/min
21	1000	31.7	1000	31.7	1000	31.7
25	1000	46.6	1000	46.6	875	48.3
26	1000	50.7	1000	50.7	780	54.0
28	1000	60.0	800	63.5	650	66.4
32	785	81.0	600	85.2	475	88.0
35	640	99.4	490	103.5	395	106.1
38	525	120.0	410	123.7	330	126.2
40	465	135.2	365	138.8	295	141.2
45	360	174.6	285	178.0	230	180.4
48	315	200.8	245	204.4	200	206.7
50	285	219.3	225	222.7	185	224.9
53	250	248.8	200	252.0	160	254.4
55	230	270.0	185	273.0	150	275.4
57	215	291.8	170	295.1	140	297.2
60	190	326.8	150	329.6	125	331.6
65	160	387.1	125	390.4	100	392.7

All performances are nominal based on a pump crank shaft speed of 510 rpm
Flow indicated is maximum actual flow at zero pressure

Flowplants' policy is one of continuous improvement and the right is reserved to revise specifications without prior notice.

